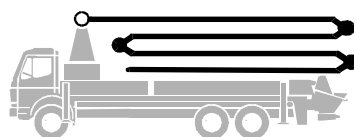


Truck-mounted concrete pump

BSF 36.09 H

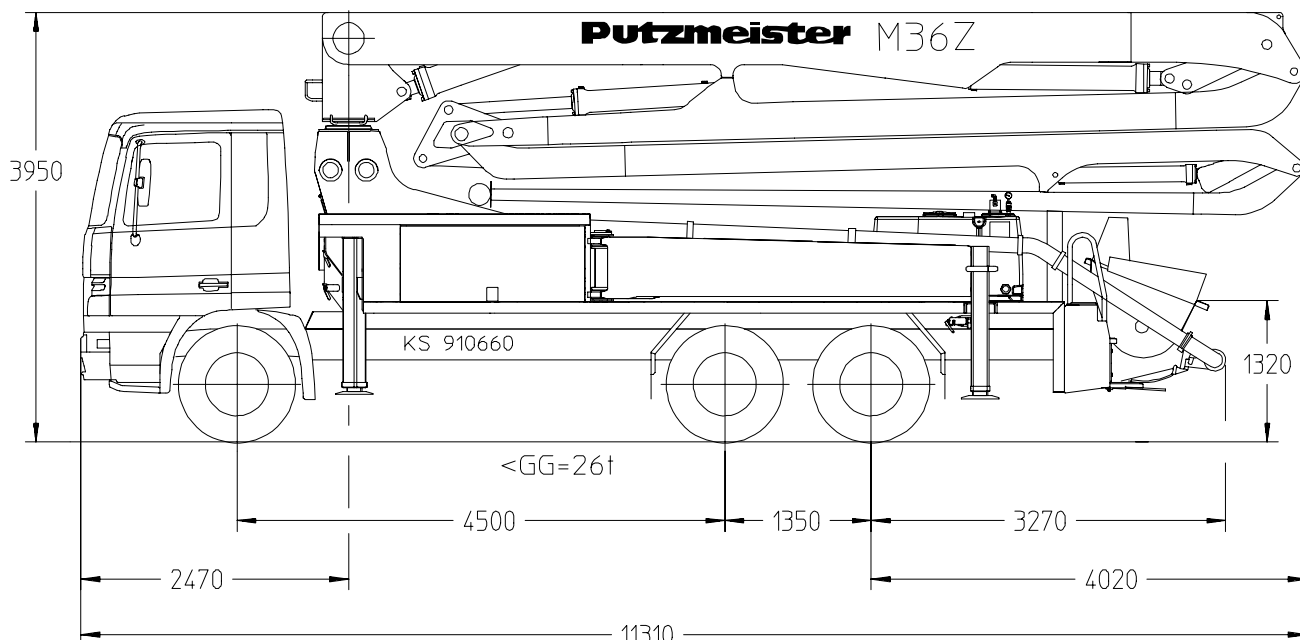


.14 H

.16 H

.16 H LS

Output up to 160 m³/h
Delivery pressure up to 130 bar



Note: Standard version. Dimensions and weights depend on truck and pump model.
Dimensions in mm, MB-Actros 2632 as example

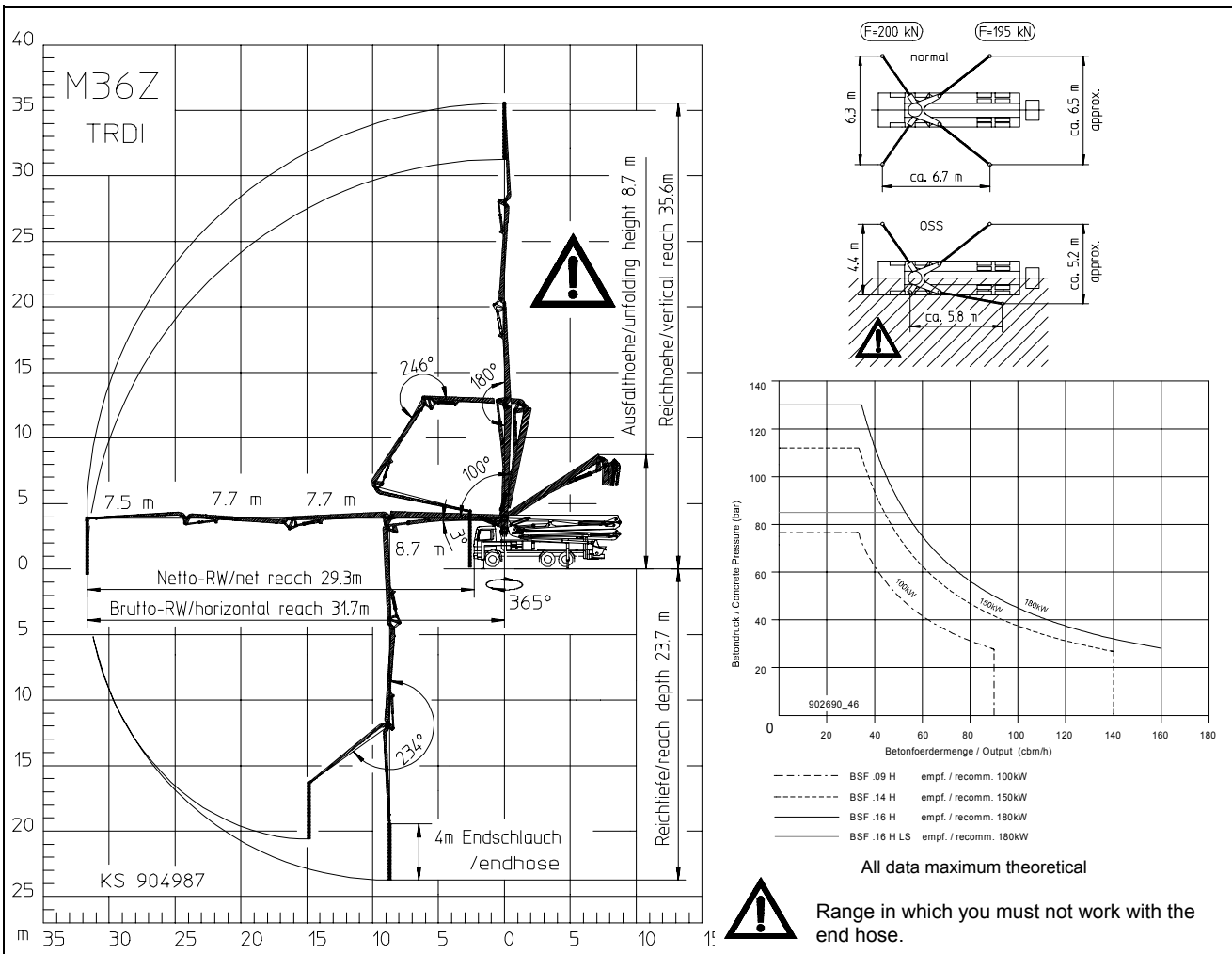
Technical Data

Boom M 36		
Reach height	m	35.6
Horizontal reach	gross	m 31.7
	net	m 29.3
Reach depth max.	m	23.7
Unfolding height	m	8.7
End hose length	m	4
Number of arms	4	
Folding system	Z-fold (Z)	
Delivery line	DN 125/5.5	

Pump		BSF	.09 H	.14 H	.16 H	.16 H LS
Rod side	Output	m ³ /h	-	140	160	-
	Delivery pressure	bar	-	70	85	-
	Strokes	1/min.	-	27	31	-
Piston side	Output	m ³ /h	90	88	108	160
	Delivery pressure	bar	78	112	130	85
	Strokes	1/min.	26	17	21	26
	Delivery cylinder	∅ mm	230	230	230	250
	Stroke	mm	1400	2100	2100	2100

Delivery line boom max. 85 bar.
All data maximum theoretical.

Reach information diagram, Support, Performance diagram



Delivery scope

	Standard	Options Package *	Options Package Plus
support plates 4x in magazine	●		
concrete hopper RS 900 with agitator RS 900 M at BSF. 16 H LS	●		
diagnose interface, central for electric and hydraulic	●		
remote control CPC with 40 m cable	●		
central lubrication strip hopper	●		
rubber collar	●		
painting: arm assembly RAL 3020 signalred	●		
painting: pump MB 1227 chrome yellow	●		
flushing water pump 160 l/min 25 bar	●		
water tank	●		
concrete line DN125, 5.5" 133x4	●		
concrete line DN125, 5.5" PM 22 twin layer		●	
concrete line DN125, 5.5" PM 252 Proline			●
support plates 4x + timber wood 8x600 in magazine		●	●
radio remote control prop.incl. CPC with output remote control by regulator, engine start/stop		●	●
traffic permission kit		●	●
EOC (Ergonic output control)		●	●
splash guard foldable on rubber collar		●	●
lighting in toolbox		●	●
central lubrication hopper, electrical		●	●
horn at the boom		●	●
working search light on boom for hopper illumination			●
spotlights 4x for illumination support area			●
flashlights for 4 support legs front and rear			●
high pressure water pump 100 bar with dry-run protection			●
vibrator, electrical			●
hard metal wear parts kit			●

* recommended in Europe

special: Ergonic Boom Control EBC
One Side Support OSS

Please see quotation for exact serial delivery scope.